

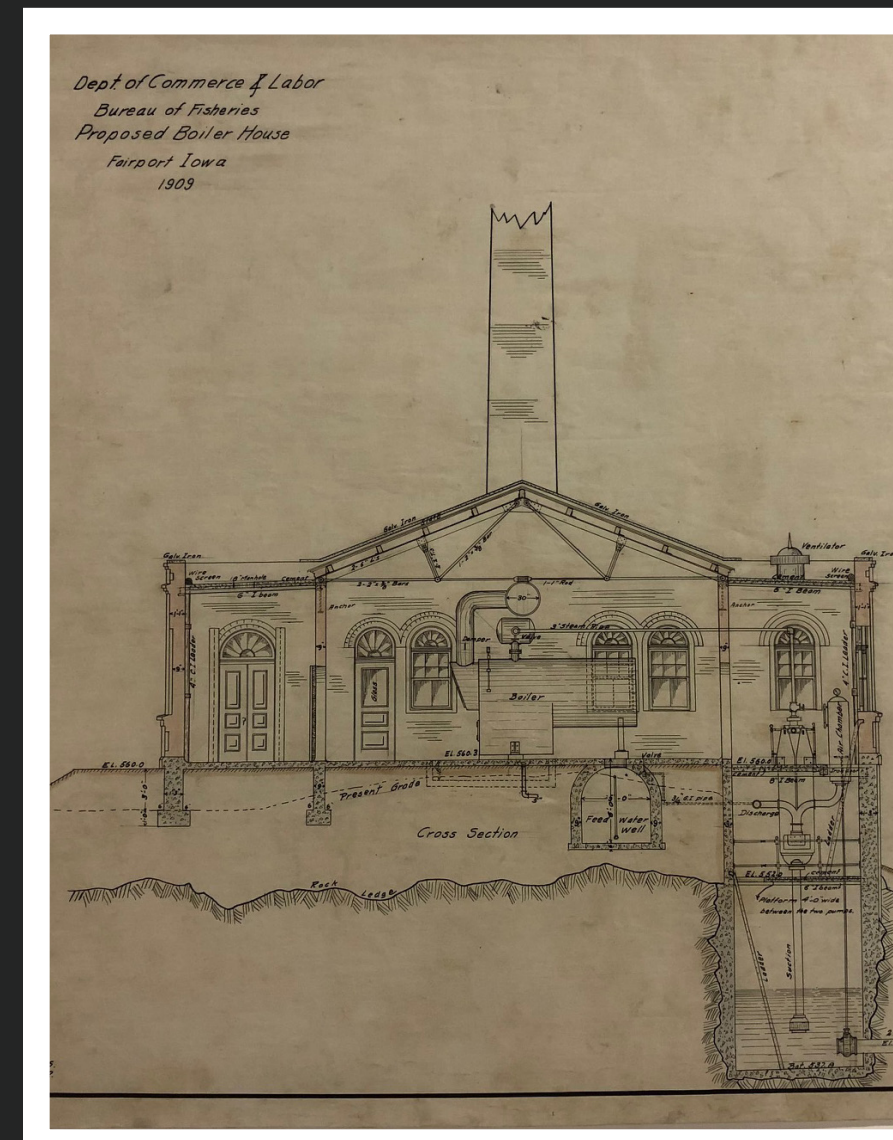
#16 Pumphouse

The Pumphouse, the most important building on the property, opened in 1912. The Pumphouse supplied river water to the Main Laboratory, Temporary Laboratory, Tank House, and Main Reservoir. It also supplied filtered river water to the Low- and High-Pressure Cisterns. Pumping equipment included: a suction pipe into a 25 feet deep, open well pit with two 12-inch pipes, three steam turbine pumps (40, 20 and 15-horsepower), and two coal-powered boilers. The larger pumping units supplied water to the reservoir and laboratories; the smallest pump supplied filtered water to the two cisterns. The building was divided into three sections: the north section consisted of the coal vault, the central section housed the boiler room, and the south section contained the pumps and a small office. In 1931, two electric pumps replaced the two steam boilers.

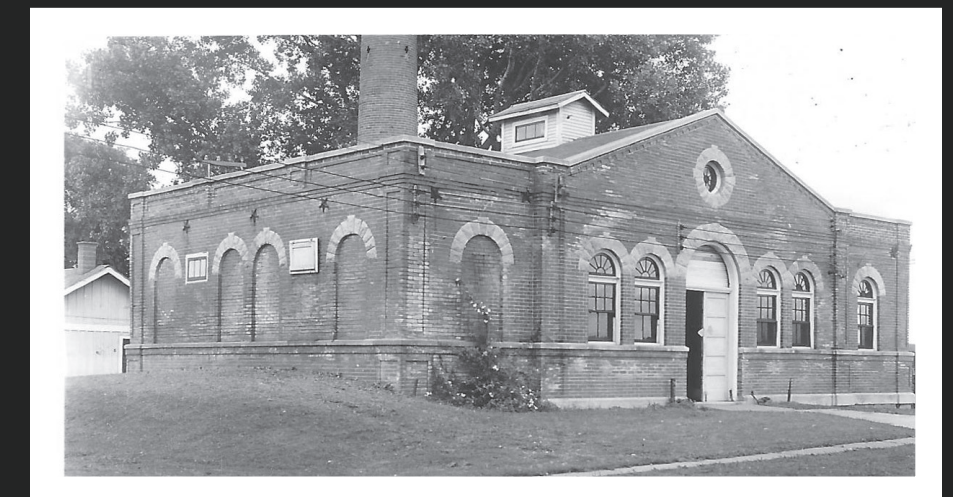
The Romanesque Revival design of the Pumphouse consisted of a brick exterior and decorative sandstone arches over the doors and windows. A faux-bullseye window was situated above the main door with faux windows on the north elevation. The central section of the Pumphouse had a gable roof with steel truss I-beams for support. The north and south wings had a flat roof. In 1945, the original smokestack was demolished, and a smaller smokestack was constructed from salvaged bricks. With construction of the new Pumphouse in 1967, the original Pumphouse was converted to a “holding house” for fish. The boilers and pumps were removed, and 12 concrete holding tanks were constructed in the central section. In 1984 and 1996, the Iowa State Historic Preservation Office stated the Pumphouse was eligible for the National Register, but no action was taken.



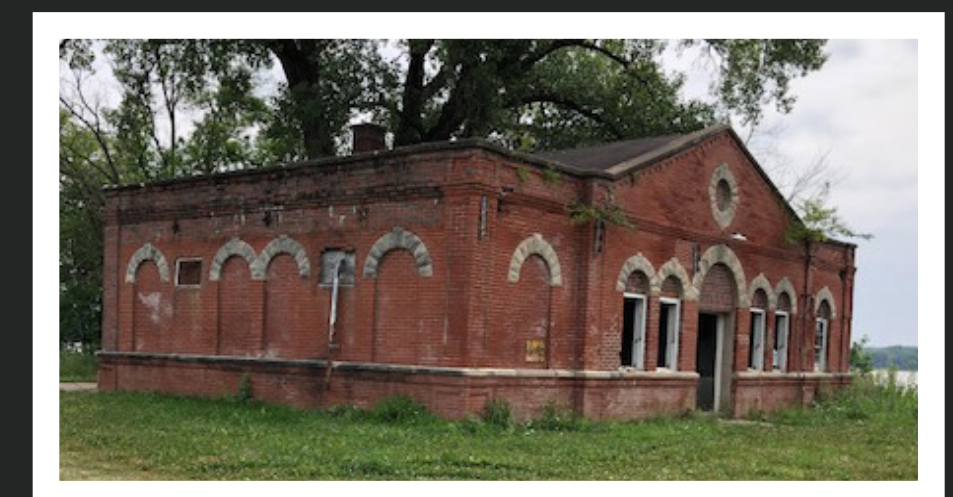
Overview of the Pumphouse during construction in 1910, facing southeast.



1910 preconstruction design plans (cross-section) of the Pumphouse, facing east.



Overview of the Pumphouse, circa 1941, facing southeast.



Overview of the Pumphouse in 2021, facing southeast.



SCAN ME

